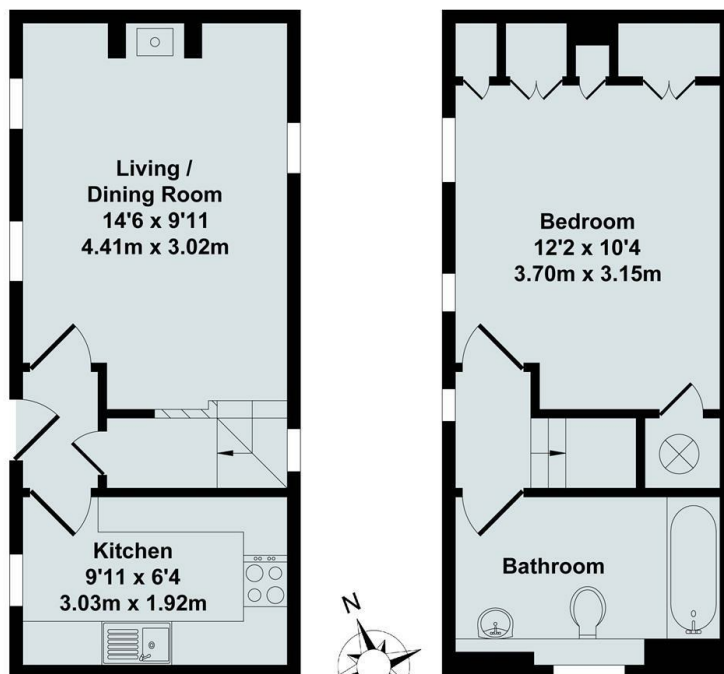




## 75 Eaton Road, Appleton, Oxon, OX13 5JJ

£1,050 PCM - 13th February 2026.

- VILLAGE LOCATION
- 477 SQ FT
- SHED WITH POWER
- GRAVEL PARKING TO THE SIDE OF THE PROPERTY
- END OF TERRACE
- COURTYARD GARDEN
- WOOD BURNER
- COTTAGE
- LIVING ROOM/DINING ROOM
- DOUBLE BEDROOM



Ground Floor

First Floor

Total Approx. Floor Area 477 Sq.Ft. (44.30 Sq.M.)

All items illustrated on this plan are included in the "Total Approx Floor Area"

## Directions

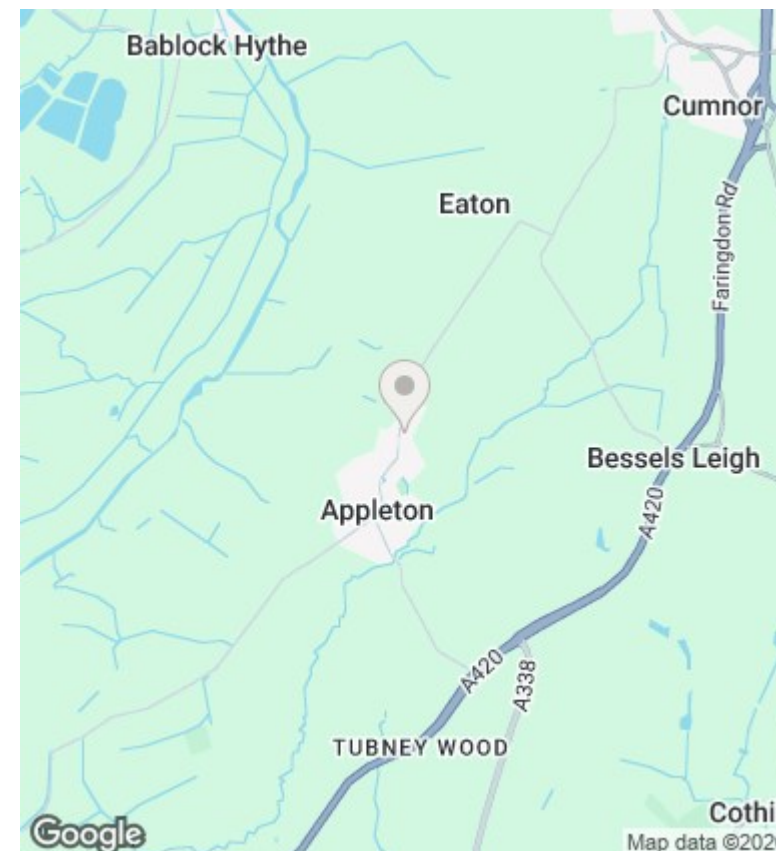
## Viewings

Viewings by arrangement only. Call 01235 554950 to make an appointment.

## Council Tax Band

C

## EPC Rating:



Energy Efficiency Rating		
	Current	Potential
Very energy efficient - lower running costs		
(92 plus) <b>A</b>		
(81-91) <b>B</b>		
(69-80) <b>C</b>		
(55-68) <b>D</b>		
(39-54) <b>E</b>		
(21-38) <b>F</b>		
(1-20) <b>G</b>		
Not energy efficient - higher running costs		
<b>England &amp; Wales</b>	EU Directive 2002/91/EC	